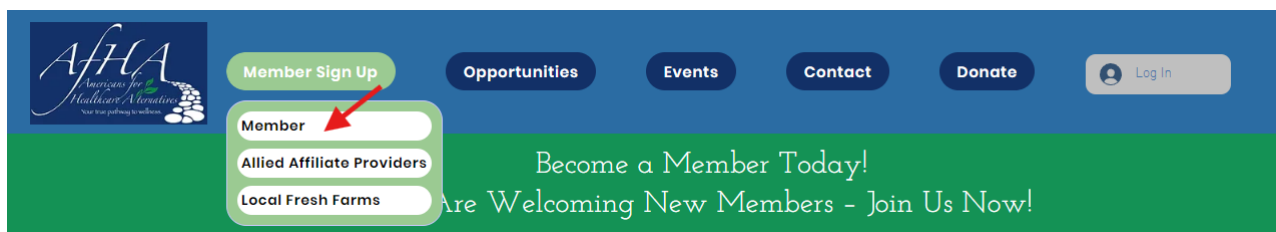




How to Enroll as an AFHA Member

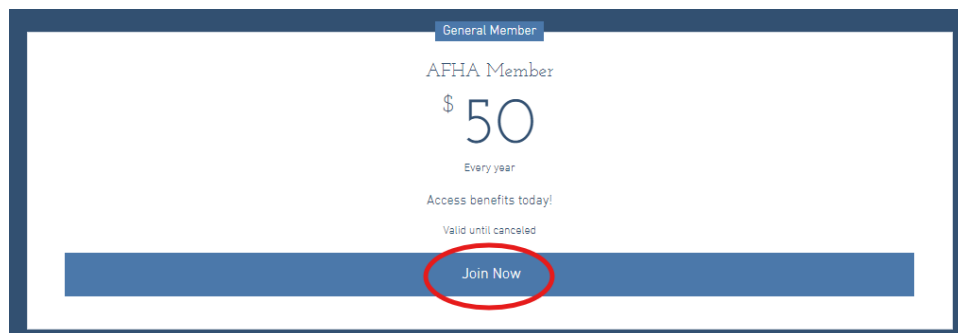
1. Visit the AFHA Website

- Go to www.afha.health.
- Click on the "Member Signup" button and select "Member".



2. Review Member Benefits

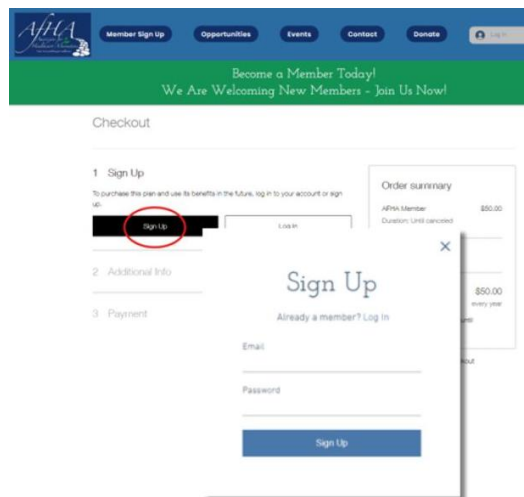
- Read through the benefits provided by AFHA membership.
- Scroll to the "Join Now" section.
- Don't forget to read the **PMA Membership Application** terms below this section.





3. Create Your Account

- On the **Checkout page**, click "**Sign Up**".
- Enter your **email** and create a **password**.
- **Confirm your email** following the instructions provided.



4. Complete Registration

- Fill in the required information to complete registration.
- Enter your **payment information** and submit.

3 Payment

Card number

Expiration date

CVV/CVC

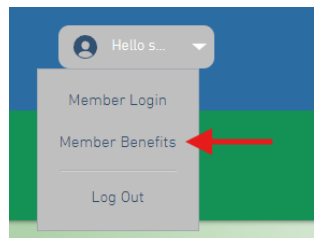
Cardholder name

By completing the purchase, you agree to save this card and allow future payments connected to this order.



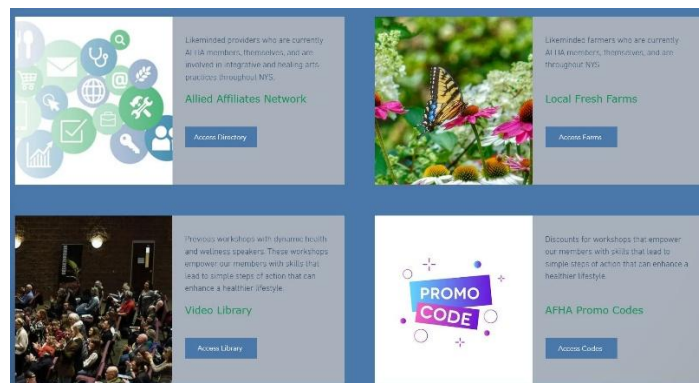
5. Access Member Benefits

- After a successful registration, you'll see a **Thank You** message and receive a **confirmation email**.
- Click on your **profile icon** (grey button with your name or initials in the top right corner) and select **Member Benefits**.



6. Explore Exclusive Member Benefits

- On the Welcome screen, scroll down to access benefits:
 - **Provider Directory (Allied Affiliates Network)**
 - **Local Fresh Farms**
 - **Video Library**
 - **Promo Codes**





7. Logging In for Returning Users

- Go to www.afha.health and click **Log In**.
- Enter your **Login and Password**.
- Click on your profile icon, and select **Member Benefits** to continue exploring.

A screenshot of the AFHA website's navigation bar and a pop-up login form. The navigation bar is dark blue and contains the AFHA logo on the left, followed by buttons for 'Member Sign Up', 'Opportunities', 'Events', 'Contact', and 'Donate'. A 'Log In' button with a user icon is circled in red. Below the navigation bar is a green banner with the text 'Become a Member Today' and 'We Are Welcoming New Members'. A white login form is overlaid on the right side, titled 'Log In'. It contains three input fields: 'Email *', 'Password *', and 'Forgot password?'. A dark blue 'Log In' button is at the bottom of the form.